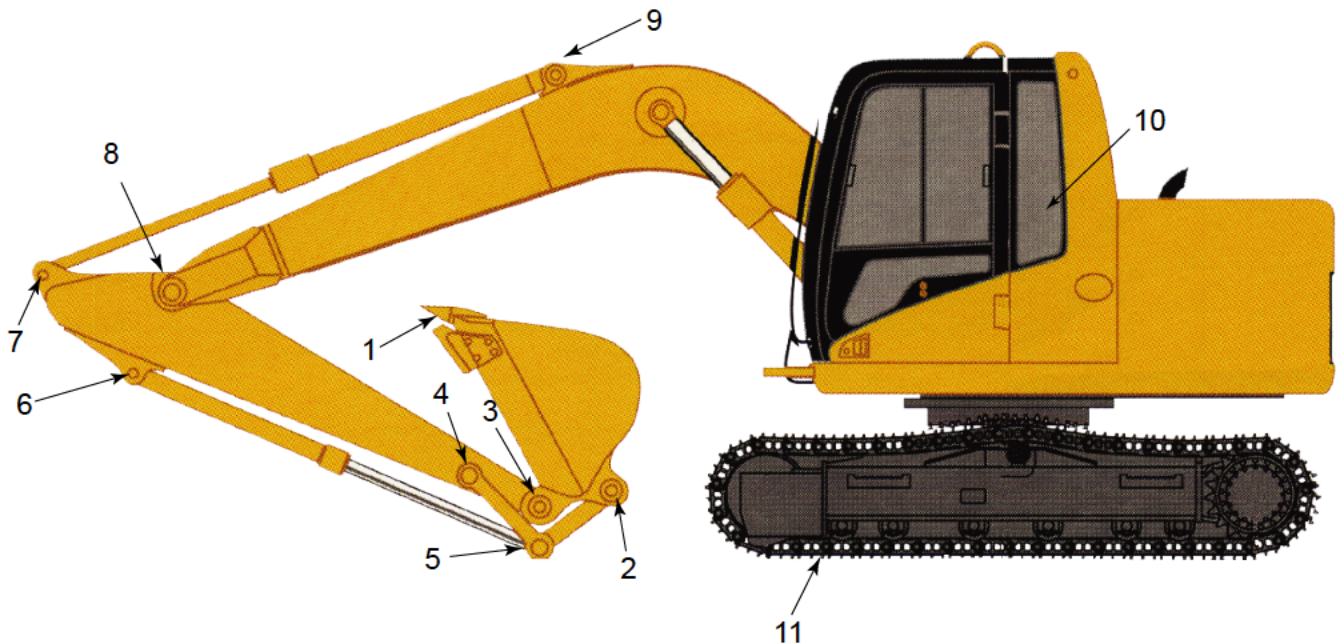


Item	Description
1	Bucket Teeth
2	Bucket to Linkage Pin
3	Bucket to Stick Pin
4	Stick Linkage Pin
5	Bucket Cylinder Rod End to Linkage
6	Bucket Cylinder Pin
7	Stick Cylinder Rod End Pin
8	Stick to Boom Pin
9	Cylinder Pin to Stick
10	Boom to Frame (insert ONLY)
11	Track Master Pin

SAFETY FIRST

1. Wear Safety Equipment.
2. Keep hands and feet clear.
3. Beware of flying objects.

Prior to removing any pins or parts refer to Manufacturers Service manual for proper procedures for securing and stabilizing equipment.



See back for Pin Removal / Insertion specifications and recommended Slide Sledge® tool kit.

The following removal and insertion tips are manufacturer recommendations for this model. Other model excavators may use similar tips and tools for similar removals. Consult with manufacturer for specific models and uses.

Item	Tool/Tip	Description	Part#
#1	R/I Tool	9 lb./30" Slide Sledge	25050
	R/I Tip	1/2" Bucket Tooth Remover	25280
	R/I Tip	1/2" Bucket Tooth Inserter	25270
#2	R/I Tool	9 lb./30" Slide Sledge	25050
	R/I Tip	1 1/4" Pin Driver	25290
#3	R/I Tool	9 lb./30" Slide Sledge	25050
	R/I Tip	1 1/4" Pin Driver	25290
#4	R/I Tool	9 lb./30" Slide Sledge	25050
	R/I Tip	1 1/4" Pin Driver	25290
#5	R/I Tool	9 lb./30" Slide Sledge	25050
	R/I Tip	1 1/4" Pin Driver	25290
#6	R/I Tool	9 lb./30" Slide Sledge	25050
	R/I Tip	1 1/4" Pin Driver	25290
#7	R/I Tool	9 lb./30" Slide Sledge	25050
	R/I Tip	1 1/4" Pin Driver	25290
#8	R/I Tool	9 lb./30" Slide Sledge	25050
	R/I Tip	1 1/4" Pin Driver	25290
#9	R/I Tool	9 lb./30" Slide Sledge	25050
	R/I Tip	1 1/4" Pin Driver	25290
#10	R/I Tool	9 lb./30" Slide Sledge	25050
	R/I Tip	1 1/4" Pin Driver	25290
#11	R/I Tool	9 lb./30" Slide Sledge	25050
	R/I Tip	7/8" Pin Driver	25225
	Accessory	5 lb. Handle Weight	1001001

Recommended Tool Kit for 307-312 type Excavator

Product	Part#
9 lb./36" Slide Sledge	25050
7/8" Pin Driver	25225
1 1/4" Pin Driver	25290
1/2" Bucket Tooth Remover	25280
1/2" Bucket Tooth Inserter	25270
Utility Wedge	25325
5 lb. Add On Weight	1001001

Removal and installation should only be performed on pins that have been properly serviced and maintained.